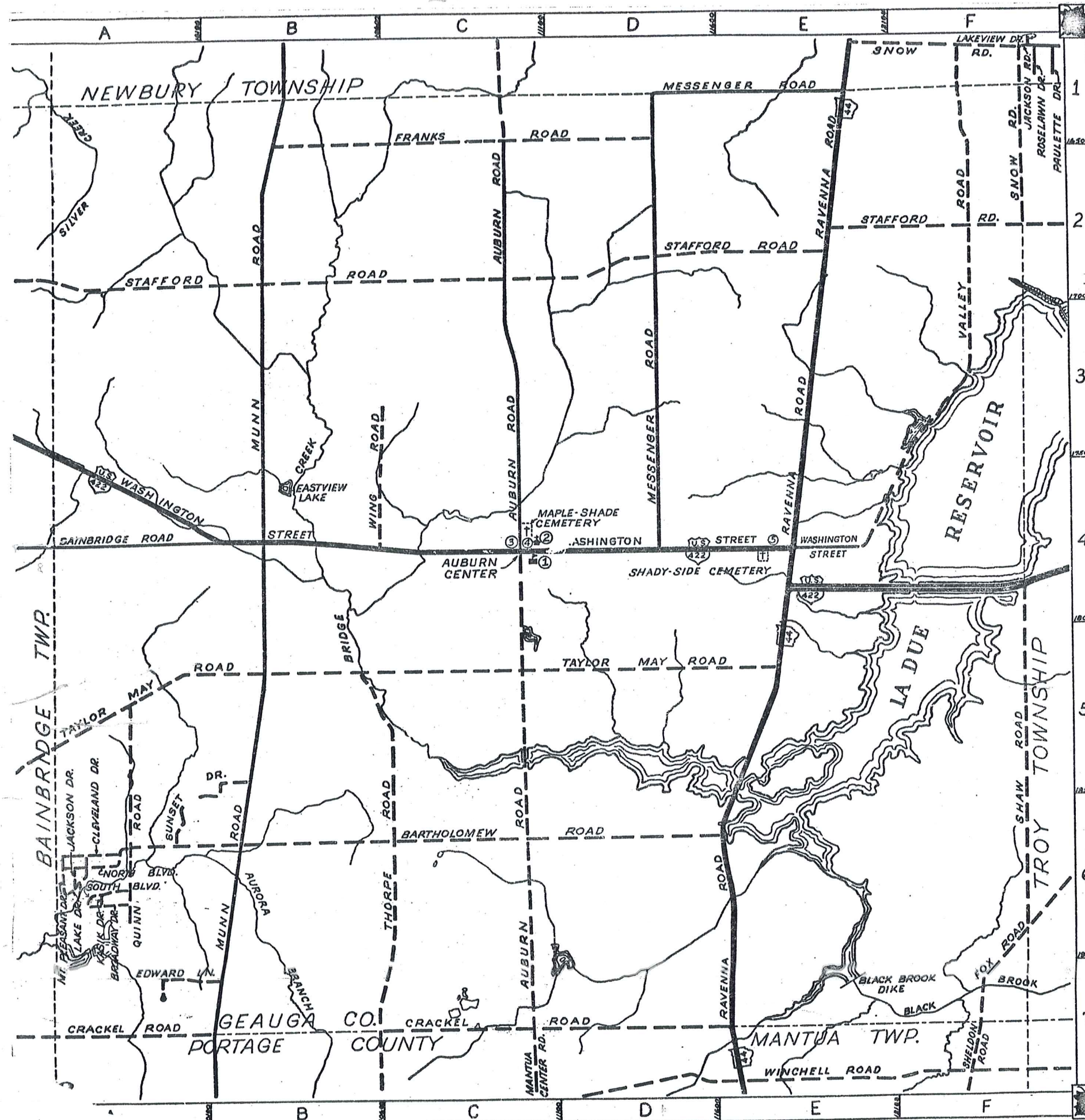


ROAD INDEX



1	A	AUBURN ROAD	C1-C7	J	JACKSON DRIVE	A6	S	SHAW ROAD	F4-F6
								SNOW ROAD	F1-F2
								SOUTH BLVD.	A6
								STAFFORD RD.	A2-E2
								SUNSET DRIVE	B5-A6
2	B	BAINBRIDGE ROAD	A4	K	KASIK DRIVE	A6	T	TAYLOR MAY RD.	A5-E5
		BARTHOLOMEW RD.	A6-D6					THORPE ROAD	B5-B7
		BROADWAY DRIVE	A6						
3	C	CLEVELAND DRIVE	A6	L	LAKE DRIVE	A6	U		
		CRACKEL ROAD	A7-E7						
4	D	EDWARD LANE	A7	M	MESSENGER RD.	E1-D4	V	VALLEY ROAD	F1-E4
					MT. PLEASANT DR.	A6			
					MUNN RD.	B1-B7			
5	E	FOX ROAD	F6-F7	N	NORTH BLVD.	A6	W	WASHINGTON ST.	A3-E4
		FRANKS ROAD	B1-D1					WING ROAD	C3-C4
6	F			O			X		
7	G			P			Y		
	H			Q	QUINN ROAD	A5-A6	Z		
	I			R	RAVENNA RD.	E1-E7			

- ① AUBURN ELEM. SCHOOL
- ② AUBURN COMMUNITY CHURCH
- ③ AUBURN TOWN HALL
- ④ AUBURN VOL. FIRE DEPT.
- ⑤ STATE HIGHWAY GARAGE (SUB-STATION)

AUBURN TOWNSHIP

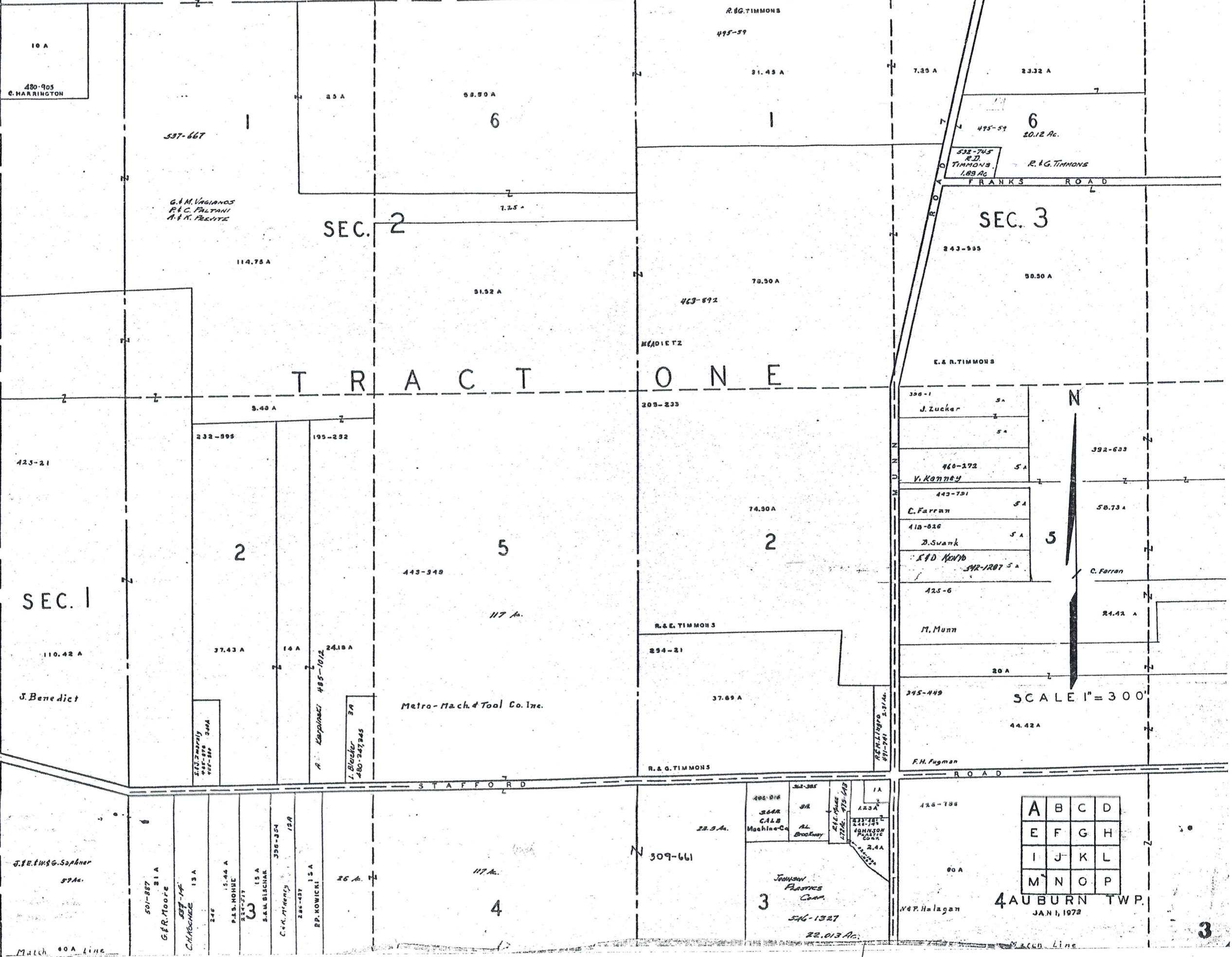
SCALE: 1" = 2000'

G. J. ROBINSON
GEAUGA COUNTY ENGINEER

- UNPAVED ROAD
- PAVED ROAD
- TOWNSHIP LINE
- COUNTY LINE

NEWBURY TOWNSHIP

BAINBRIDGE TOWNSHIP



10 A
480-905
G. HARRINGTON

537-667
G. M. VAGIANOS
P. C. FALTONI
A. & K. PRITZ

SEC. 2

R. G. TIMMONS
495-59
31.43 A

7.35 A
23.32 A
495-59
6
20.12 Ac.

532-745
R.D.
TIMMONS
1.89 Ac.
R. & G. TIMMONS

SEC. 3

243-535
59.50 A

E. & R. TIMMONS

T R A C T O N E

423-21

SEC. 1

110.42 A
J. Benedict

232-595

2

195-252

5

443-348

117 A.

Metro-Mach. & Tool Co. Inc.

305-233

74.30 A

2

R. & E. TIMMONS

254-21

37.69 A

R. & G. TIMMONS

396-1
J. Zucker
5 A

5 A

460-272
V. Kanney
5 A

443-791
C. Farran
5 A

418-626
B. Swank
5 A

519-1207
S. D. Newby
5 A

425-6
C. Farran

M. Munn

20 A

345-449
44.42 A

F. H. Fugman

SCALE 1" = 300'

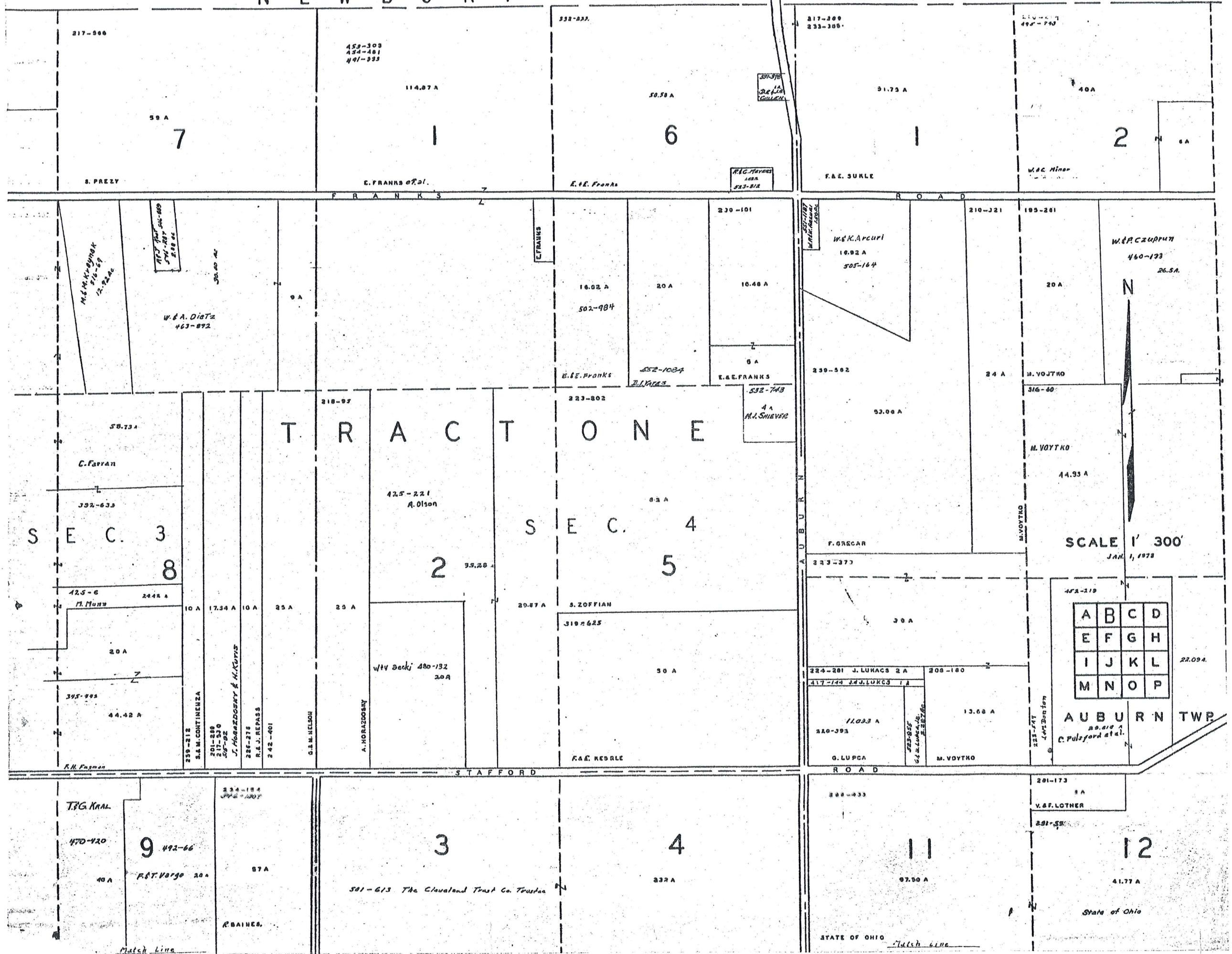
A	B	C	D
E	F	G	H
I	J	K	L
M	N	O	P

4 AUBURN TWP.
JAN 1, 1978

Mulch 60 A Line

Mulch 60 A Line

NEWBURY TWP.



N
SCALE 1" = 300'
JAN. 1, 1978

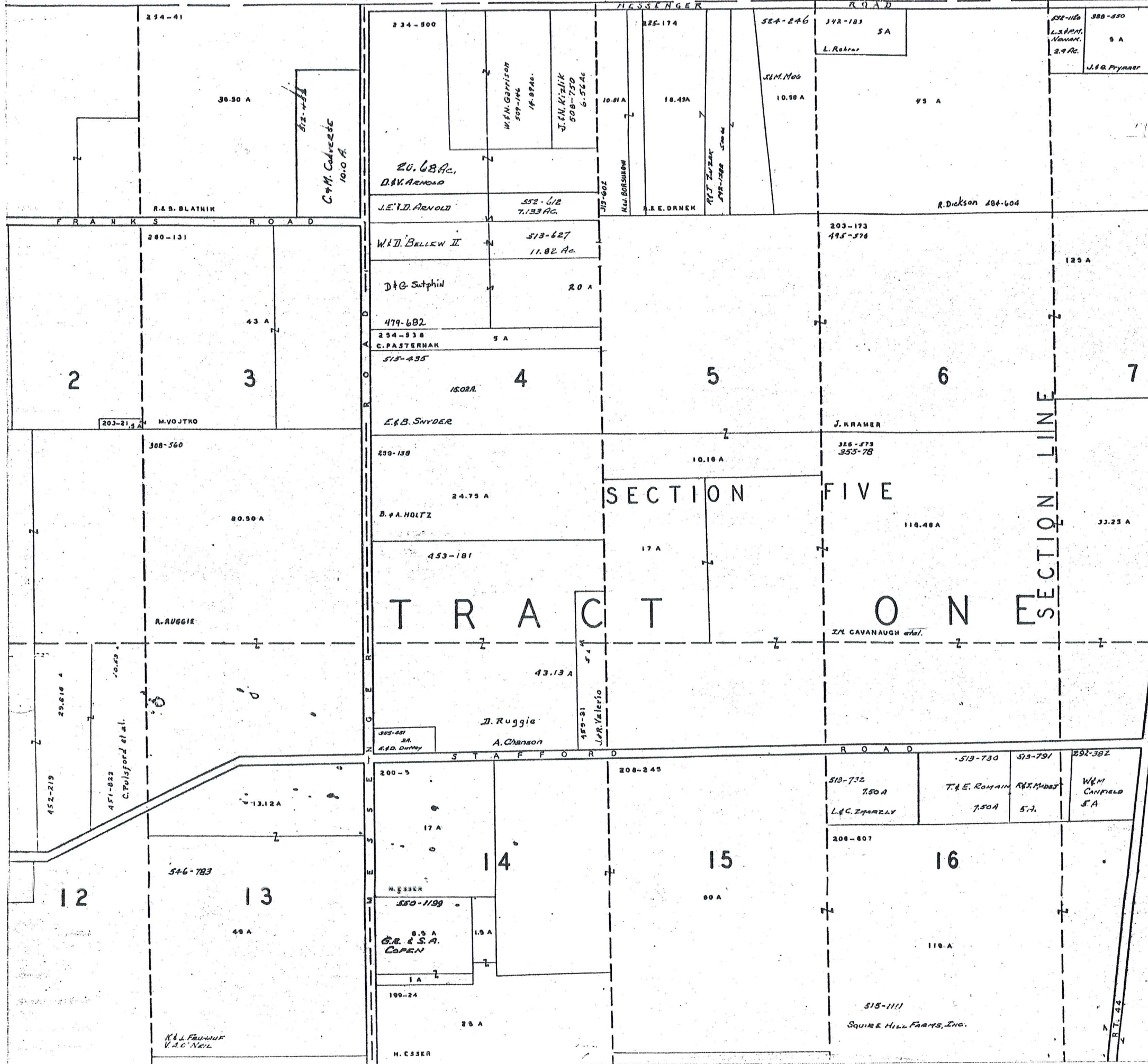
A	B	C	D
E	F	G	H
I	J	K	L
M	N	O	P

AUBURN TWP.

STATE OF OHIO
Match Line

Match Line

NEW BURY TOWNSHIP

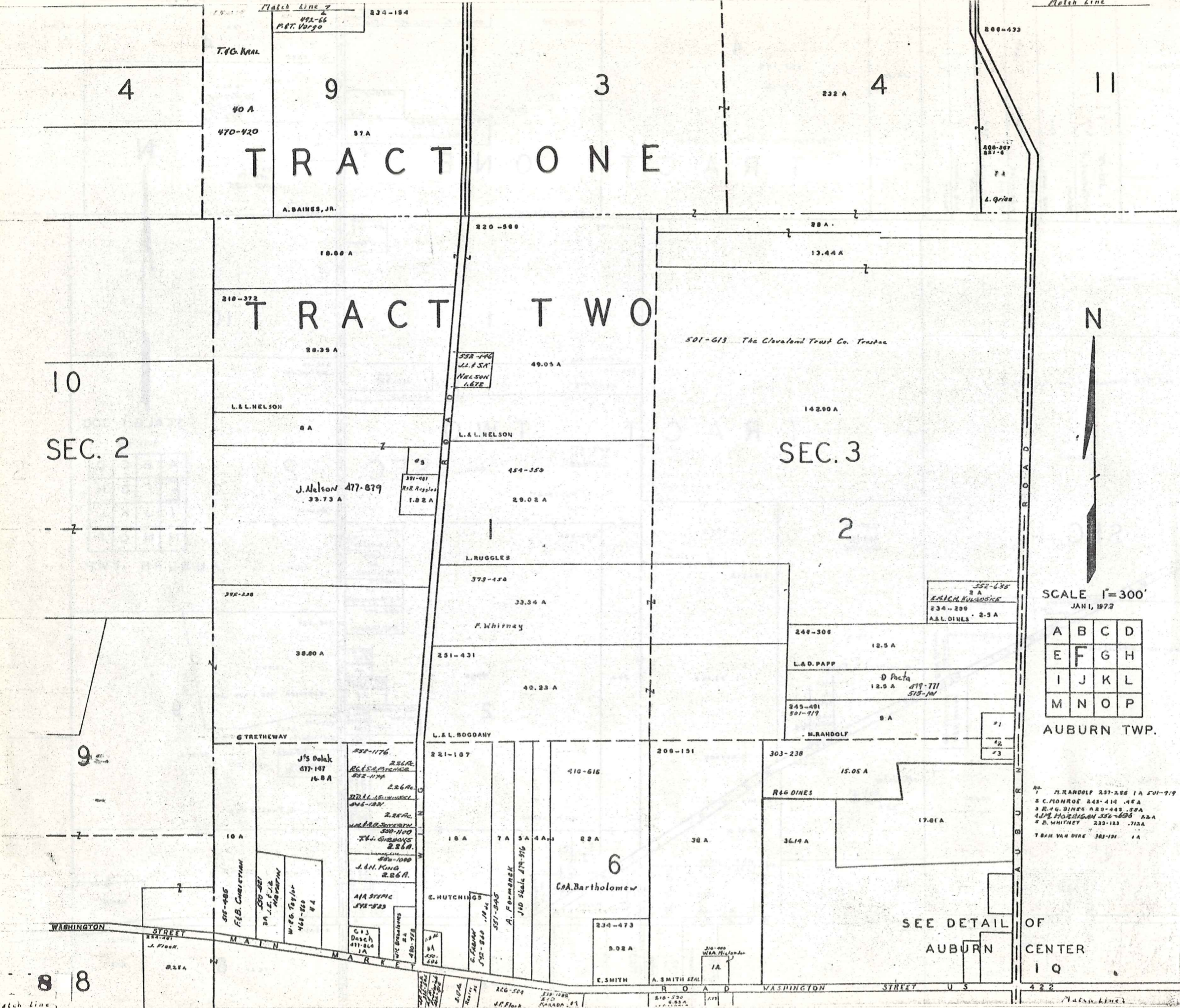


SECTION FIVE TRACT ON SECTION LINE

SCALE 1 300
JAN 1, 1923

A	B	C	D
E	F	G	H
I	J	K	L
M	N	O	P

AUBURN TWP.



TRACT ONE

TRACT TWO

SEC. 2

SEC. 3

6



SCALE 1"=300'
JAN 1, 1973

A	B	C	D
E	F	G	H
I	J	K	L
M	N	O	P

AUBURN TWP.

- 1 M. RANDOLF 237-238 1A 501-919
- 2 C. MONROE 243-414 45A
- 3 R. G. DINES 220-443 50A
- 4 J. P. HOBBS 552-608 22A
- 5 F. WHITNEY 233-123 71A
- 6 BEN VAN DYKE 303-191 1A

SEE DETAIL OF
AUBURN
CENTER
1 Q

8 8

PLAT 198 B 1 A B C D E F G H I J K L M N O P Q

266-433

388-277

387-122

332-515

H. ESSER

580-818
D.R. SHATTUCK 7.187 AC.

538-293
F.F. COGHLIN 7.1366 AC.

R. SQUIRE - 206-607
J.E.P. PAGE 591-834 5.75 AC.

5
1A

3A

208-538

A.C. Janson
496-754

28-01 AC
501-473

205-276

32-47 AC

L. KIDD

200-112

13.86 A

E. LAYE

250-201

3.6 A

E. V. SCALA

356-153

20A.

W.B. Nokes

309A

M. HAMILTON

4
351

309A

M. HAIKO

167-77

538A

492-446 2A

R. HALL

502-389

J.L. DAY ET AL

463-798
47.24 A

E. FEAR

30.53 A

d. SQUIRE

224-568

40.03 A

127-B
475-576

41A

J. KRAMER

532-1259

103.15 A

V.M. OUDREY

114.57

Keller Investment Co.
496-1001

2.11 A

261-831

U. DAY

285-338

J.L. DAY

572-585 2A

S.F.C. SCARSON

225-722 2A

L. SCARSON

11
37.50 A

TRACT ONE

387-122
389-277
15.253 A

12
14.502 A

13
30 A
L. MESSINGER

20A.
H. MESSINGER

15

16

STATE OF OHIO

266-433

3
108.60 A

17.43

272-418

4

531-453
W.E. CORNACCHIONE
459-869
10A
J.S. McDaniel

STATE OF OHIO

TRACT TWO

59.98 A

42.56 A

E. Garback
520-1058

STATE OF OHIO

155-35

M. Glazar
3.73 A

31.87A

307-570

STATE OF OHIO

75A

86.43 A

224-436
502-397
502-397

20.52 A

210-33

5

20A

R. Douglas

409-355
J.M. Douglas
2A

I. PALFY

342-422

H.L. Behman
484-340
28.76

M.H. Pierce

242-355
B.C. AFFELDT
1/4 A

27 A

W.B. Nokes

454-620

20.66 A

250-201

3.6 A

20A.

W.B. Nokes

309A

M. HAMILTON

4
351

309A

M. HAIKO

309A

M. HAMILTON

4
351

309A

M. HAIKO

SEC. 4

SCALE 1 300
JAN 1, 1878

A	B	C	D
E	F	G	H
I	J	K	L
M	N	O	P

AUBURN TWP.

SEC. 3

SEE DETAIL

SHEET I-Q
AUBURN CENTER

J. Wieland,
J. Elwood
479-87

SEE DETAIL
SHEET I-R
AUBURN CORNERS

WASHINGTON STREET

422 7
259-243
R. BRAGOTICH
713A

226-600
J. KOCZANY

359-111
10A
K. P. CLARK

217-575
6.82A

110-174
5.72A

277-200
5A

117-100
2.5A

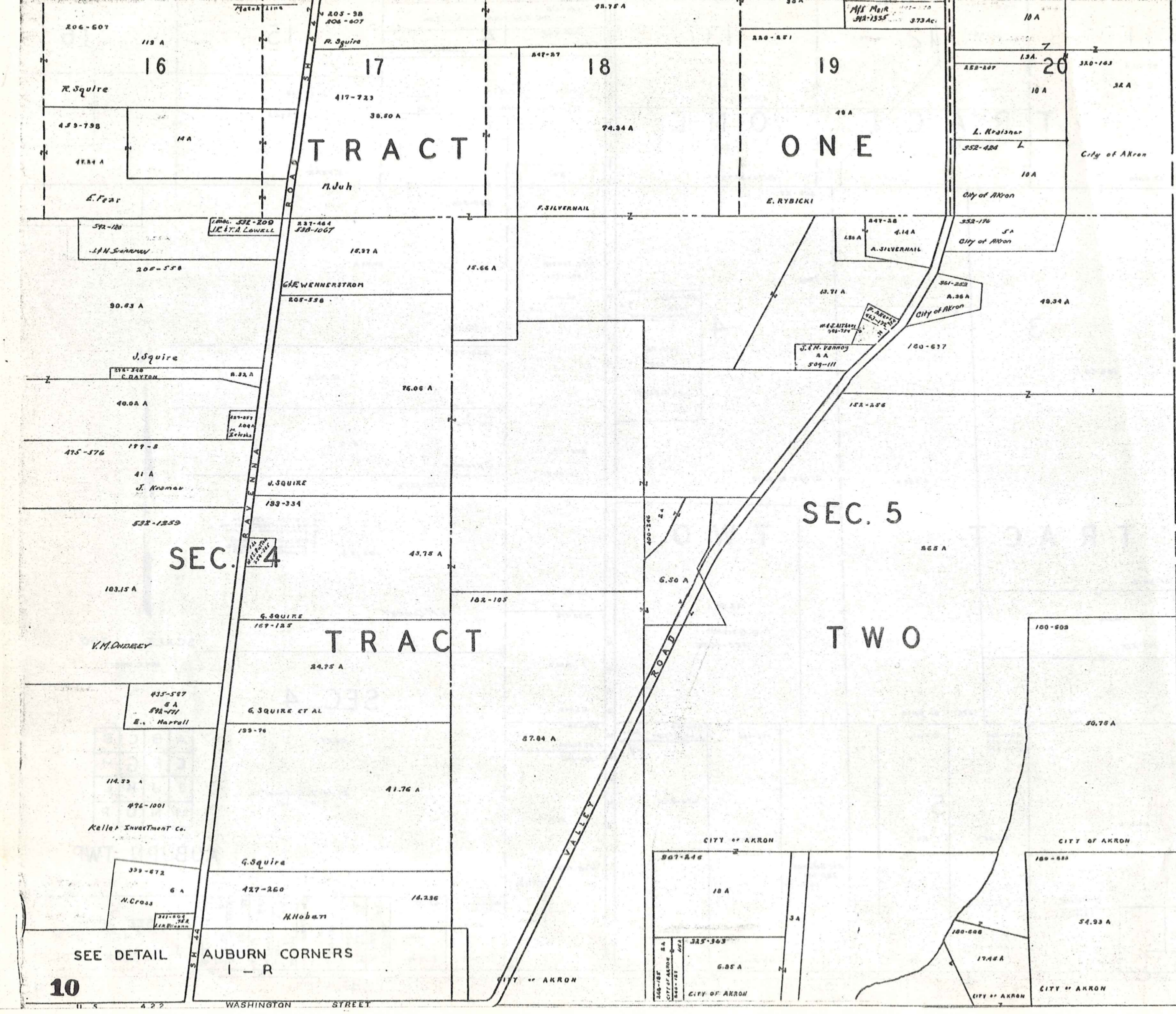
228-493
RA

151-481
BA

167-77
CL. 11

RES Lewis
464-74

MATCH LINE



TROY TOWNSHIP



SCALE 1 300

JAN 1, 1926

A	B	C	D
E	F	G	H
I	J	K	L
M	N	O	P

AUBURN TWP.

SEE DETAIL AUBURN CORNERS I - R

10

WASHINGTON STREET

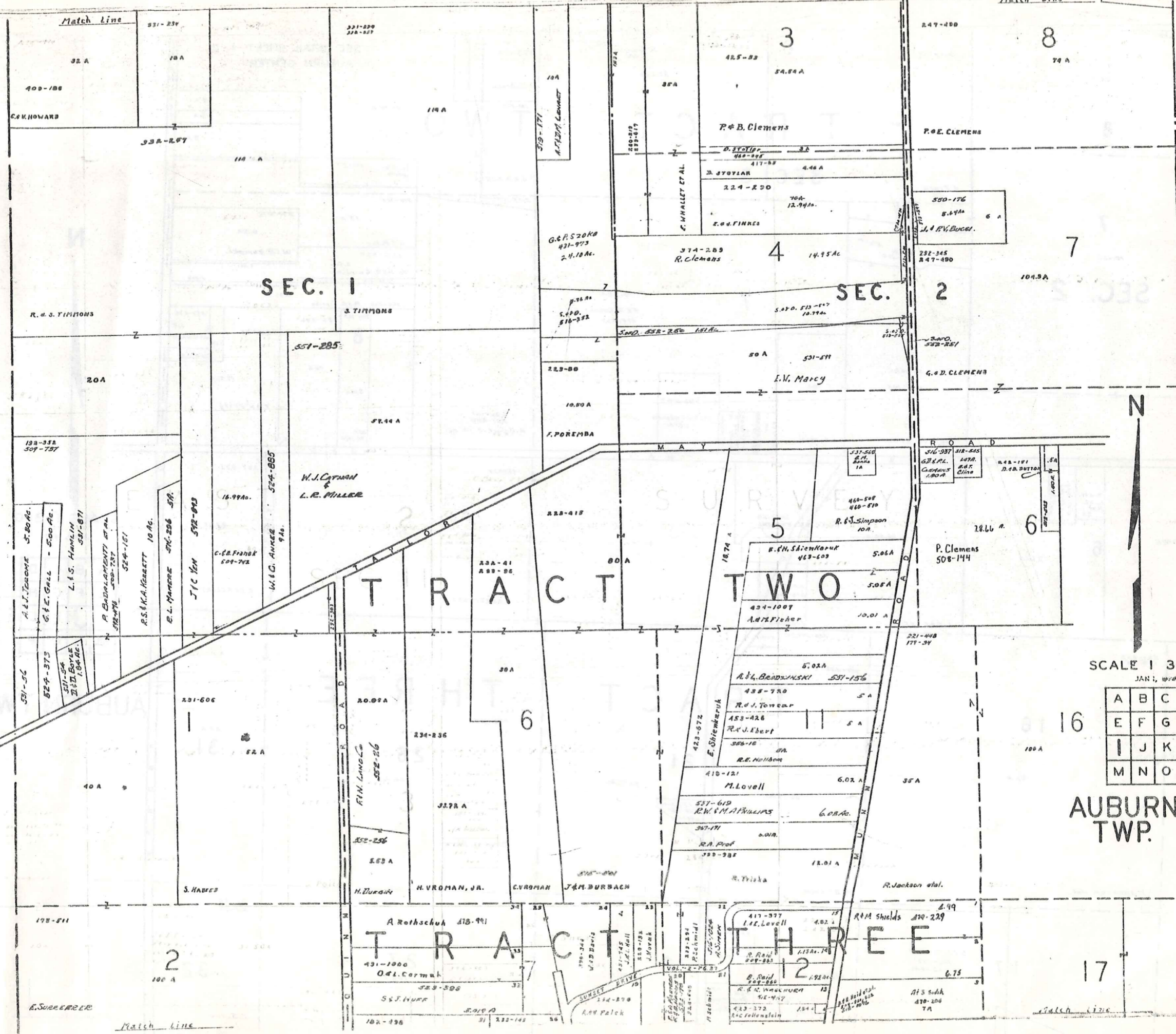
BAINBRIDGE TOWNSHIP

SEC. 1

SEC. 2

TRACT TWO

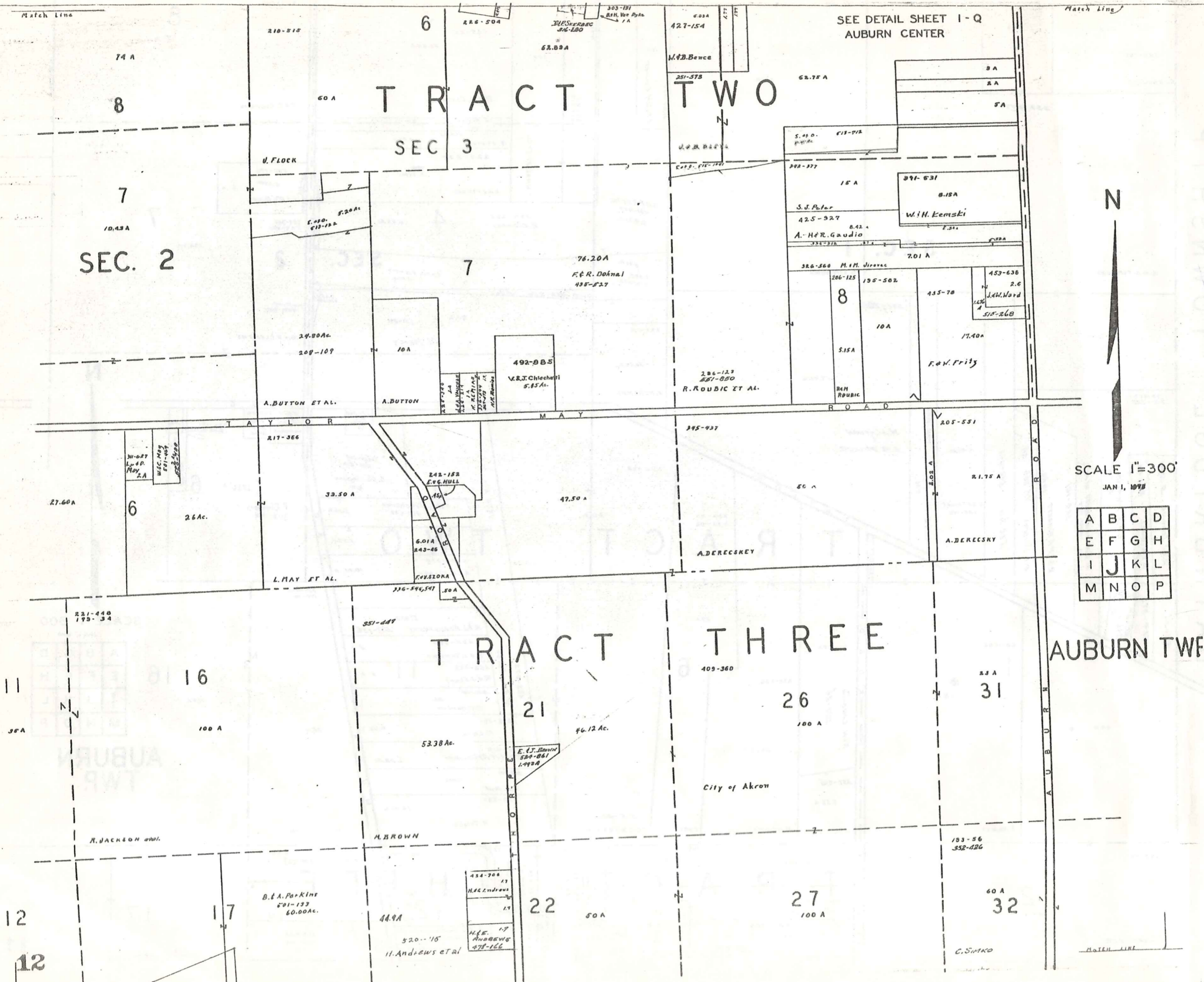
TRACT THREE



SCALE 1 300
JAN 1, 1910

A	B	C	D
E	F	G	H
I	J	K	L
M	N	O	P

AUBURN TWP.



TRACT TWO

SEC 3

TRACT THREE

AUBURN TWP



SCALE 1"=300'
JAN 1, 1978

A	B	C	D
E	F	G	H
I	J	K	L
M	N	O	P

SEE DETAIL SHEET I-Q
AUBURN CENTER

SEC. 2

TRACT

TWO

TRACT

THREE

AUBURN TWP

V. FLOCK

A. BUTTON ET AL.

A. BUTTON

V. R. J. Chiochetti
5.85 Ac.

R. ROUBIC ET AL.

W. H. Kanski

F. W. Fritz

A. DERECSEY

A. DERECSEY

City of Akron

B. A. Perkins
60.00 Ac.

H. Andrews et al

C. SIMKO

Match Line

Match Line

Match Line

Match Line

SEE AUBURN

DETAIL I-Q CENTER

5

SEE DETAIL I-R AUBURN CORNERS

J. Wisland & Elwood 419-87

R. Dragomer 29.09 Ac.

N. Kociany & Tol. 226-600

10 A R.R. Baker 800-300

Various small lots with owners like G. S. A., S. T. A., etc.

R.R. Lewis

R. S. M. Puckett 542-930

R. Puckett 700 A

SEC. 3

SEC. 4

TRACT TWO

TRACT TWO

D. Vanderwilt & T. Cadwell

A. Campana 469-615

49.33 A

45.33 A

M. Fortes

J. Klima 417-533

P. L. ASCHENBRENER

418-847

L. D. Howard

V. W. Brown

TAYLOR

BOAD

A. S. R. Kopas 460-958

F. J. Masar & M. E. Kimes

H. & R. Rogers

L. D. Howard

Acreage in default

H. W. Brown

H. Hoffman

M. M. Kohn

R. G. Kimwick

31

36

41

46

TRACT THREE

395-354

124-74

M. Danku 362-628, 630

City of Akron

26.42 A

373-263

46.90 A

City of Akron

City of Akron

City of Akron

City of Akron

32

37

42

47

Q. Simko Match line

M. Peter of sh

R. A. May

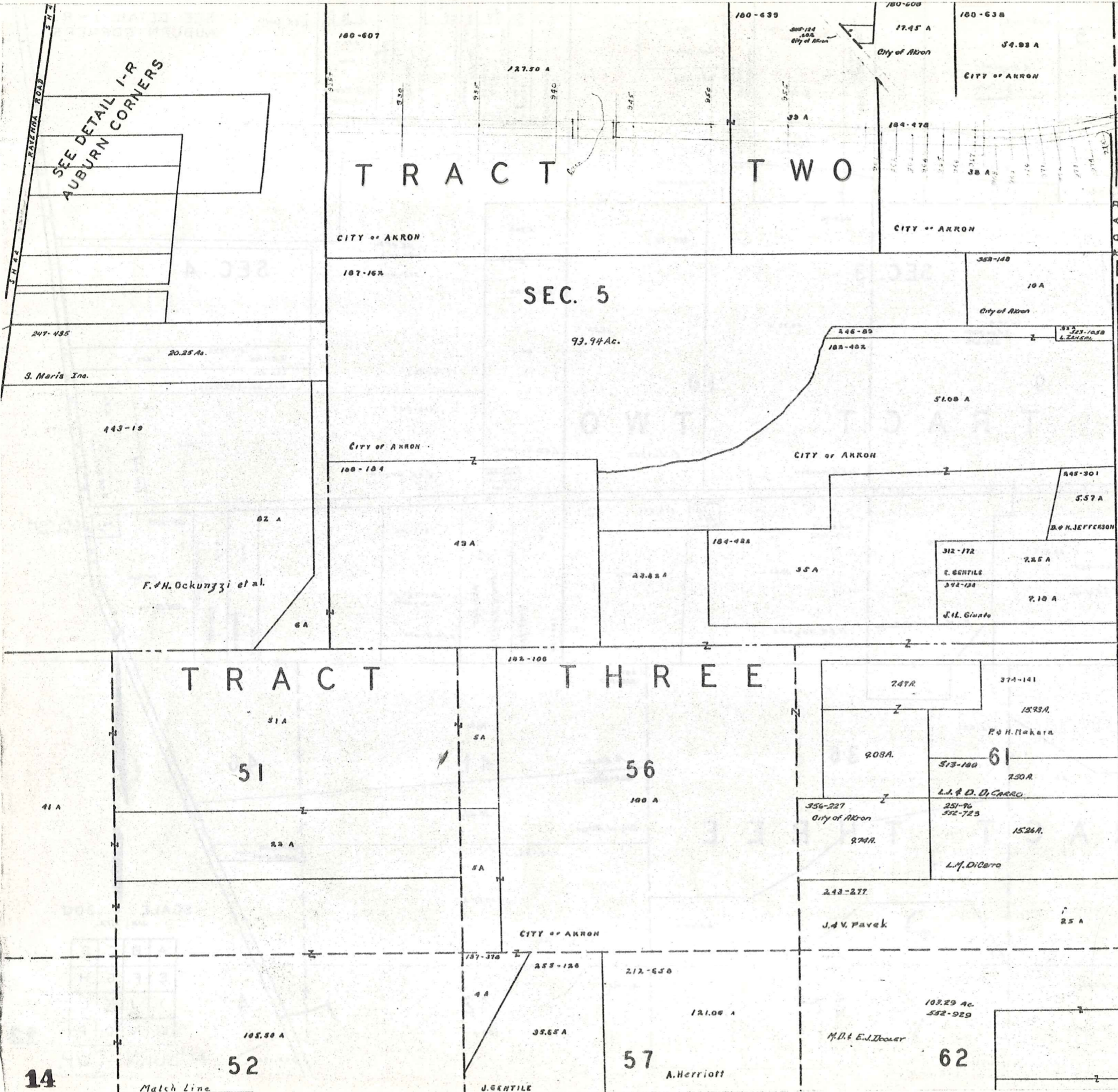
City of Akron

City of Akron

SCALE 1" = 300'

A	B	C	D
E	F	G	H
I	J	K	L
M	N	O	P

AUBURN TWP.



SEE DETAIL I-R
AUBURN CORNERS

TRACT TWO

SEC. 5

TRACT THREE

TROY TOWNSHIP



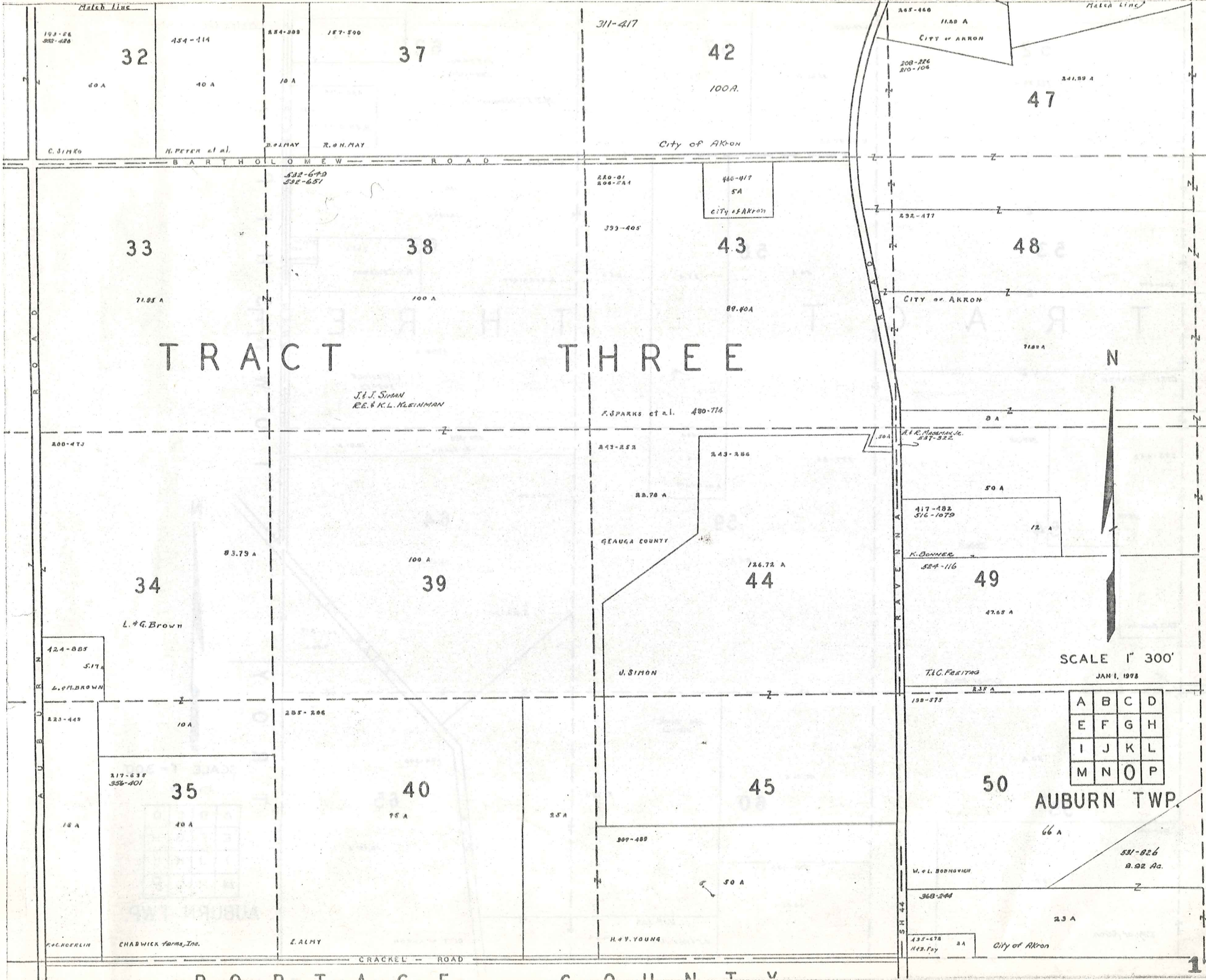
SCALE 1" 300'
JAN 1, 1973

A	B	C	D
E	F	G	H
I	J	K	L
M	N	O	P

AUBURN TWP.

Match Line

Match Line



TRACT THREE

SCALE 1" = 300'
JAN 1, 1978

A	B	C	D
E	F	G	H
I	J	K	L
M	N	O	P

AUBURN TWP.

Match line

Match line

52

57

62

53

58

63

T R A C T

T H R E

54

59

64

55

60

65

T O W N S H I P
T R O Y



SCALE 1" = 300'

JAN 1, 1973

A	B	C	D
E	F	G	H
I	J	K	L
M	N	O	P

AUBURN TWP.

841.25 A

105.50 A

35.65 A

103.29 Ac.
532-727

443-1000

R. & R. Greitzer

M.D. & E.J. Dooley

U. GENTILE

R1A-650

130

121.05 A

A. HERRIOTT

McG. Cardman

396-711
1.00
H. Cardman

47.90 A

L. Havlock
505-53

292-477

71.03 A

CITY OF AKRON

8 A

293-448

50 A

367-33

377-66

212-670

A. Harriott

550-508

R. Iselin

10.01 A

431-200

34 A

76.43 A

S. Kato

444-947

7.80 A

City of Akron

3.55 A

A. V. Vitch
478-621

50 A

35.31 A

75.76 A

104-340

56.75 A

368-244

75 A

40 A

374-409

28.63 A

537-393

A. J. & M. Vitch

18.6 A

CITY OF AKRON

29 A

City of Akron

